

Adpoly®

Adhesive Resin



ADPOLY®, a modified polyolefin adhesive resin developed through LOTTE Chemical's proprietary technology, adopts polarity by deploying reactive extrusion. This results in excellent adhesiveness with dissimilar substrates and co-extrusion of various structures, including bottles, sheets, films, pipes, etc. It is widely used as compatibilizer for adhesive layers and compounds.

Adpoly®



Adhesiveness



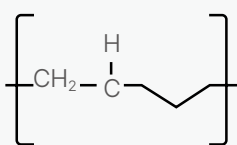
Compatibility



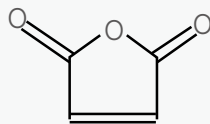
Processability



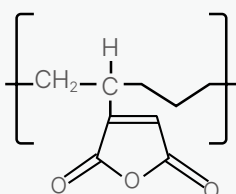
Non-toxicity



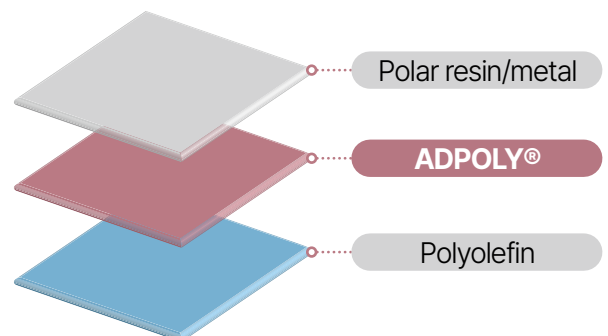
Polyolefin



Maleic anhydride
(MAH)


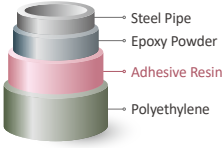





ADPOLY®



Adpoly® PRODUCT PORTFOLIO

1. Tie-Resin Excellent interlayer adhesion and moldability for multilayer

	Packaging	Steel Pipe Coating	Aluminum Composite Panel	Automotive Headliner	Food Container
		 <ul style="list-style-type: none"> Steel Pipe Epoxy Powder Adhesive Resin Polyethylene 			
PRODUCT	LLDPE, HDPE	PE, PP	PE, PP, EVA	EVA	PP
Grade	<ul style="list-style-type: none"> · TU-300T · TU-300TL · TU-300CB · BM-310 	<ul style="list-style-type: none"> · EM-520M · EM-530 · EM-400 · EM-700 · BP-402 	<ul style="list-style-type: none"> · EM-400 · BP-502 · EV-500 · EV-600 	<ul style="list-style-type: none"> · EV-500 · EV-600 	<ul style="list-style-type: none"> · ADP-4162

2. Compatibilizer Excellent compatibility for different types of materials

	Coupling Agent	Impact Modifier
Product	PE/PP (Compatibilizer)	EOR
Grade	<ul style="list-style-type: none"> · EM-510M · CM-1120H 	<ul style="list-style-type: none"> · MB-100 · MB-300



Electric Cable



WPC : Wood Plastic Composite



Automotive Wheel Cover



Posture Corrector