

Adpoly®

粘合性树脂



乐天化学自主研发的改性聚烯烃粘合性树脂Adpoly®通过反应挤出导入极性基团，具有优异的不同基材间附着力且可实现多种结构的共挤成型，并应用于Bottle、Sheet、Pipe、Tube、Film等粘合层和改性工艺中的相容剂。

Adpoly® 구성 및 특성



粘合性



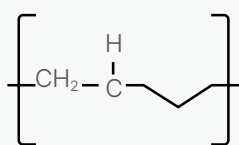
相容性



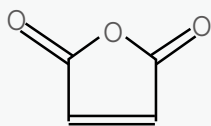
加工性



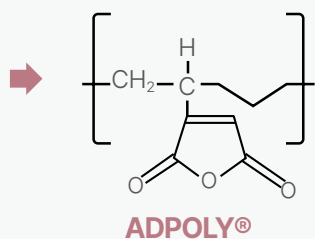
无毒性



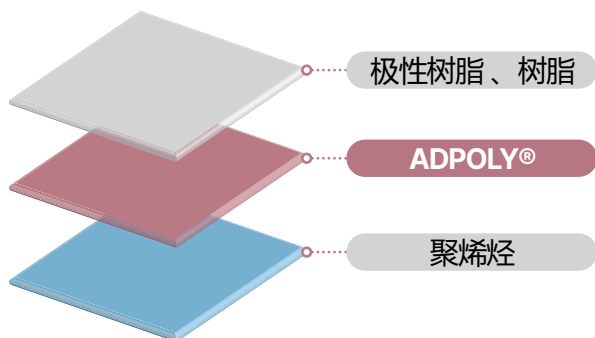
聚烯烃



顺丁烯二酸酐


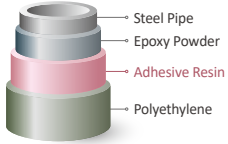





ADPOLY®



1. Tie-Resin

多层结构间卓越的粘合性和成型性

	包装材料	钢管涂层	铝复合板	汽车车标	Food Container
					
产品	LLDPE, HDPE	PE, PP	PE, PP, EVA	EVA	PP
Grade	<ul style="list-style-type: none"> · TU-300T · TU-300TL · TU-300CB · BM-310 	<ul style="list-style-type: none"> · EM-520M · EM-530 · EM-400 · EM-700 · BP-402 	<ul style="list-style-type: none"> · EM-400 · BP-502 · EV-500 · EV-600 	<ul style="list-style-type: none"> · EV-500 · EV-600 	<ul style="list-style-type: none"> · ADP-4162

2. Compatibilizer

不同素材间卓越的相容性

	偶联剂	抗冲击改性剂
产品	PE/PP (相容剂)	EOR
Grade	<ul style="list-style-type: none"> · EM-510M · CM-1120H 	<ul style="list-style-type: none"> · MB-100 · MB-300



电缆



木塑材料



毂盖



功能性座椅